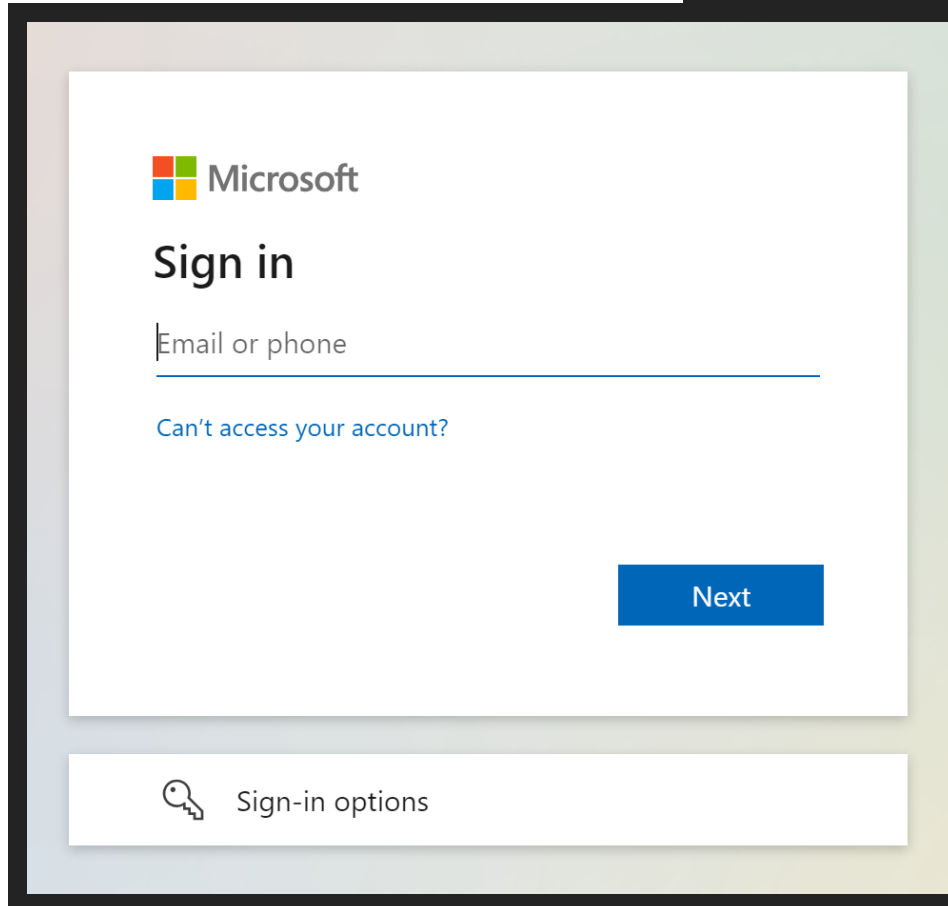


BDS CLOUD COMPUTER SETUP GUIDE

A step-by-step guide to getting your cloud computer setup on your laptop.



STEP 1: SIGNING IN



The screenshot shows the Microsoft sign-in interface. At the top left is the Microsoft logo. Below it, the text "Sign in" is displayed. A text input field is labeled "Email or phone" and is currently empty. Below the input field is a link that says "Can't access your account?". At the bottom right of the sign-in area is a blue button labeled "Next". Below the sign-in area is a section titled "Sign-in options" with a key icon.

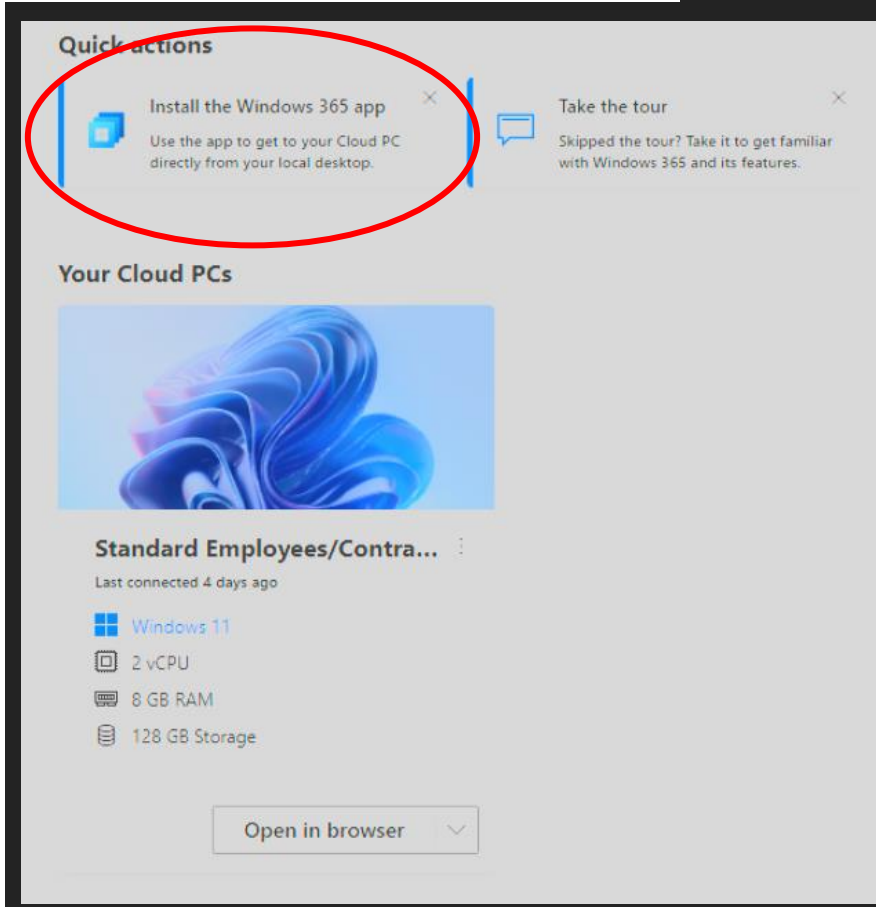
- Visit the following URL to begin the download process:

URL: <https://windows365.microsoft.com/>

- You will be prompted to sign in using your BDS email and password
- After you enter your password, you will be prompted to use your authenticator, please use your Microsoft Authenticator to finish signing in



STEP 2: GETTING STARTED



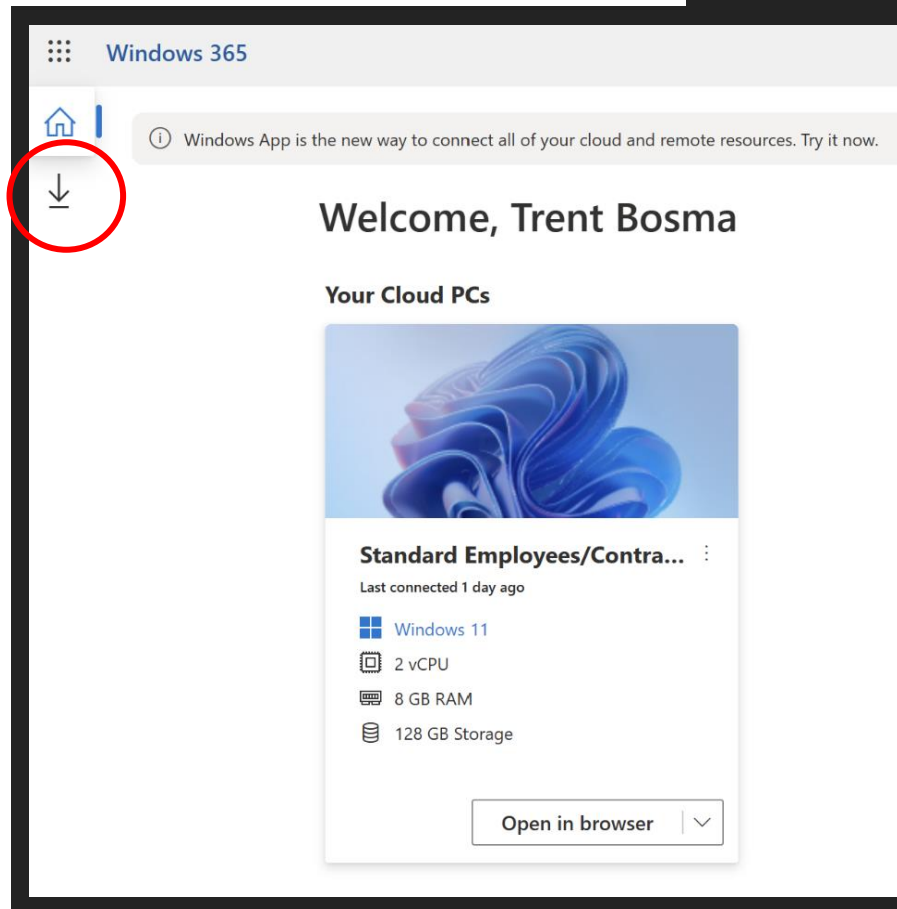
- Once you are logged in you may see a screen that looks like the image on the left

Note: The next slide will show a different variation of the webpage depending on your browser

- Click “Install the Windows 365 app” on the top left of the screen
 - This will bring you to a new page where you can select the specific download option you want to use



STEP 2.5: GETTING STARTED



- Some browsers may show the download icon represented by a down arrow on the left side
- Select this down arrow to bring up the next page to select your download option



STEP 3: DOWNLOAD OPTIONS

Download an app to use Windows 365 from your device

Windows 365 app

Use your Cloud PC like another desktop on your local PC. Manage your Cloud PC using the self-serve tools built into the app.

Windows 365 for Windows
Microsoft Corporation

[Go to Microsoft Store](#)

Microsoft Remote Desktop apps

Connect to devices and services, including your Cloud PC. You won't be able to manage your Cloud PC from the app, and your Cloud PC won't be integrated into your local device.

Microsoft Remote Desktop for Windows
Microsoft Corporation

[Get subscription URL](#)

[Download 64 bit](#)

Microsoft Remote Desktop for Mac
Microsoft Corporation

[Get subscription URL](#)

[Go to Mac App Store](#)

Microsoft Remote Desktop for iOS
Microsoft Corporation

[Get subscription URL](#)

[Go to App Store](#)

Microsoft Remote Desktop for Android
Microsoft Corporation

[Get subscription URL](#)

[Go to Google Play Store](#)

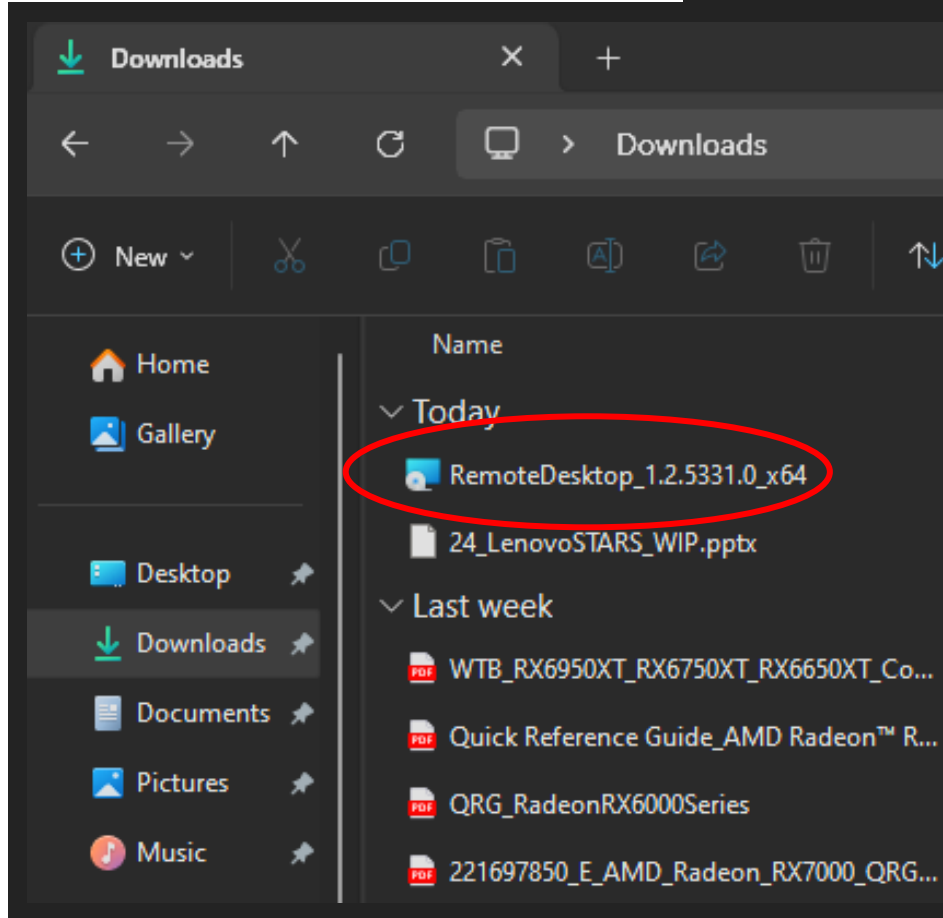
- There are multiple download options
- For this walk through we will be using the “Microsoft Remote Desktop for Windows”
- Click "Download 64 Bit" to begin the download

Note: For any other operating system, please download the appropriate option

- The applications Installation Wizard will be downloaded to your computer



STEP 4: RUN THE WIZARD



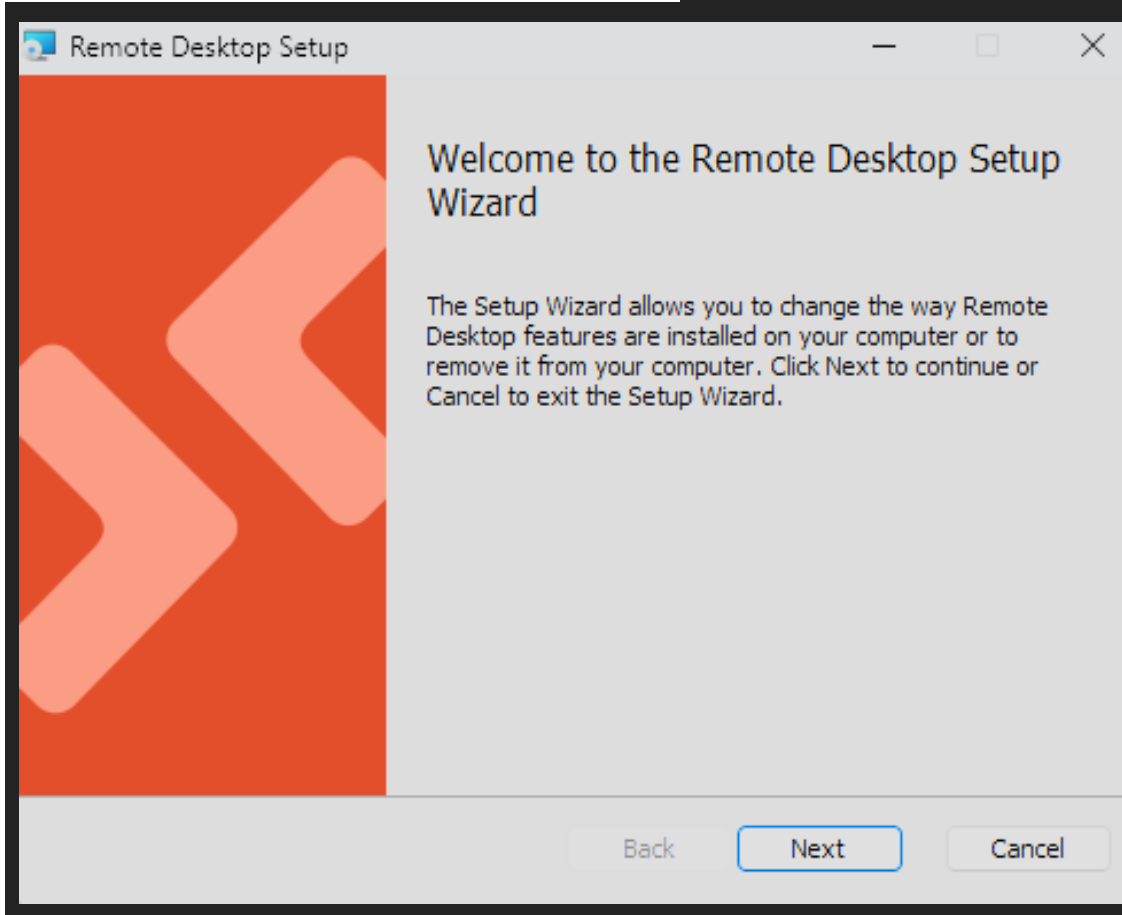
- You will find the download file in you Downloads Folder

Installer Name: RemoteDesktop_x.x.xxxx.x_x64

- Double click this application to launch the Installation Wizard



STEP 5: WIZARD NAVIGATION



- The install Wizard will walk you through the following steps
- Please follow the prompts to install

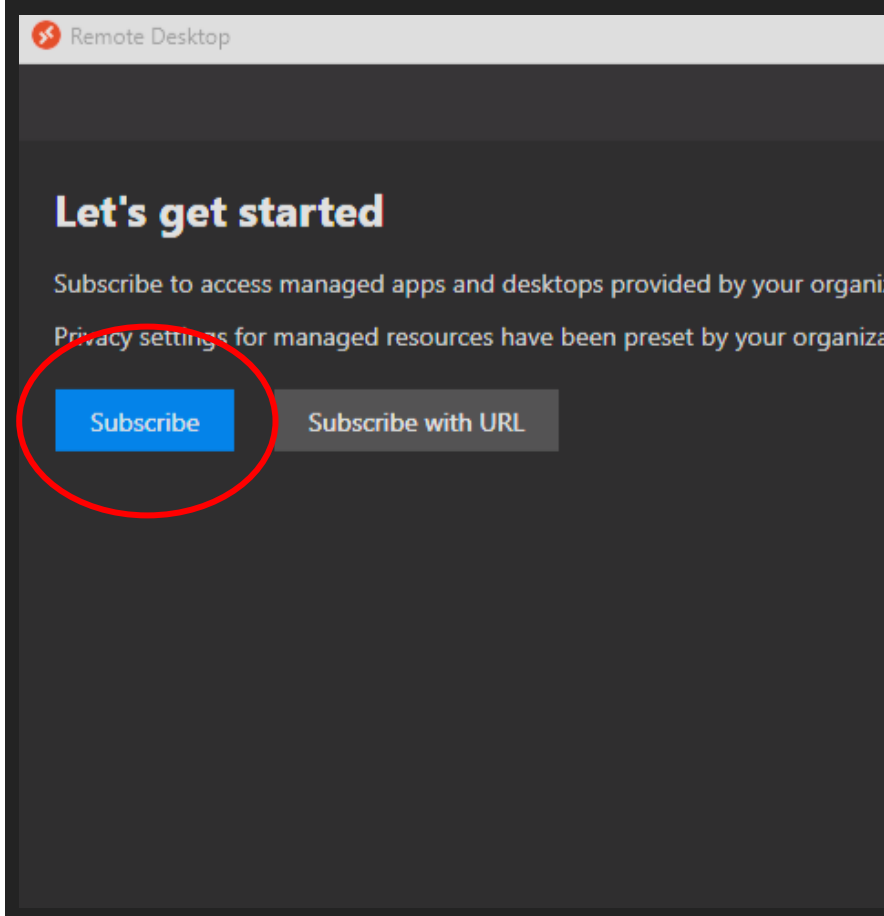
Read and accept the EULA on the second page to continue the install

After you accept the EULA select “install just for you” unless you plan on using multiple accounts

- This should be the end of the install Wizard, select finish and the program should launch



STEP 6: CLICK THE BLUE BUTTON



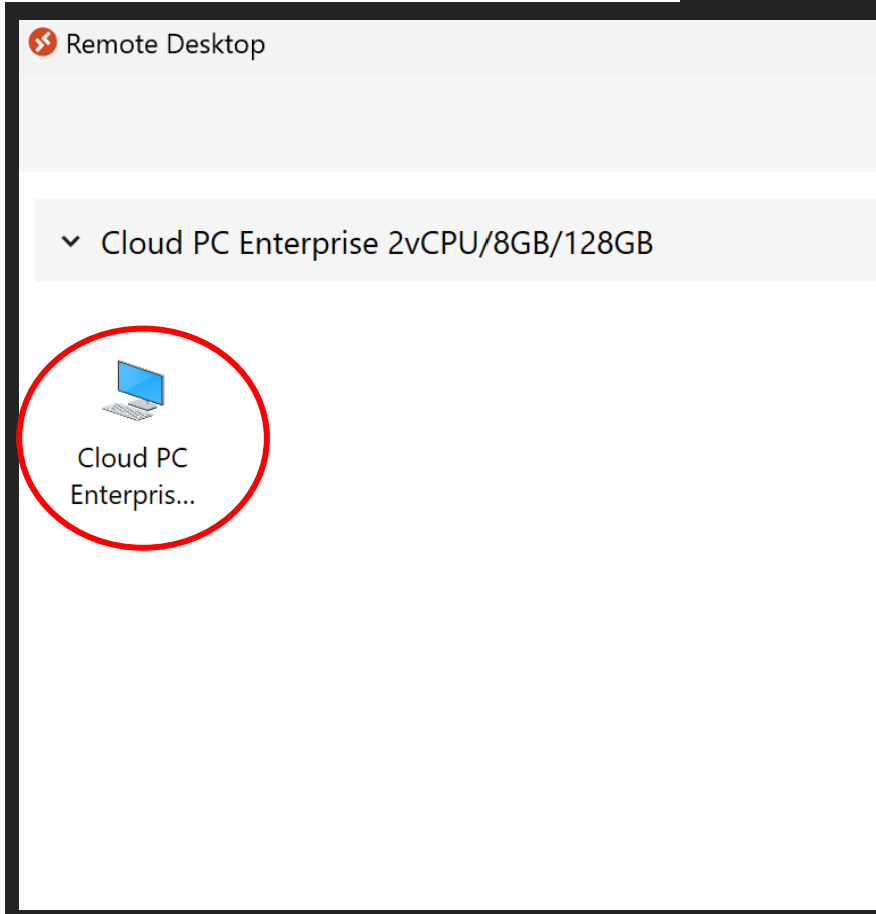
- The application should automatically launch, if it does not, find the remote desktop app and launch it

Note: Look for this icon 

- Once you are in the Remote Desktop application, select the blue "Subscribe" button
- You may be asked to sign in again, use your BDS email and password once more
- Once you log in the application will fully launch



STEP 7: LAUNCH YOUR CLOUD PC



- Once the application launches you will see a “Cloud PC Enterprise” icon in the application
- Double click the icon and the virtual cloud PC will launch
- Enjoy the wonderful world of a virtual workspace



ADDITIONAL INFORMATION



- For at home use with multiple monitors
- Right click the icon “Cloud PC Enterprise” in the Remote Desktop application
- Deselect use default settings

Note: You can now select if the VM will use one or all of your displays

- Pick up where you left off anywhere, on any device. Your cloud PC will remember right where you left off no matter where you are

